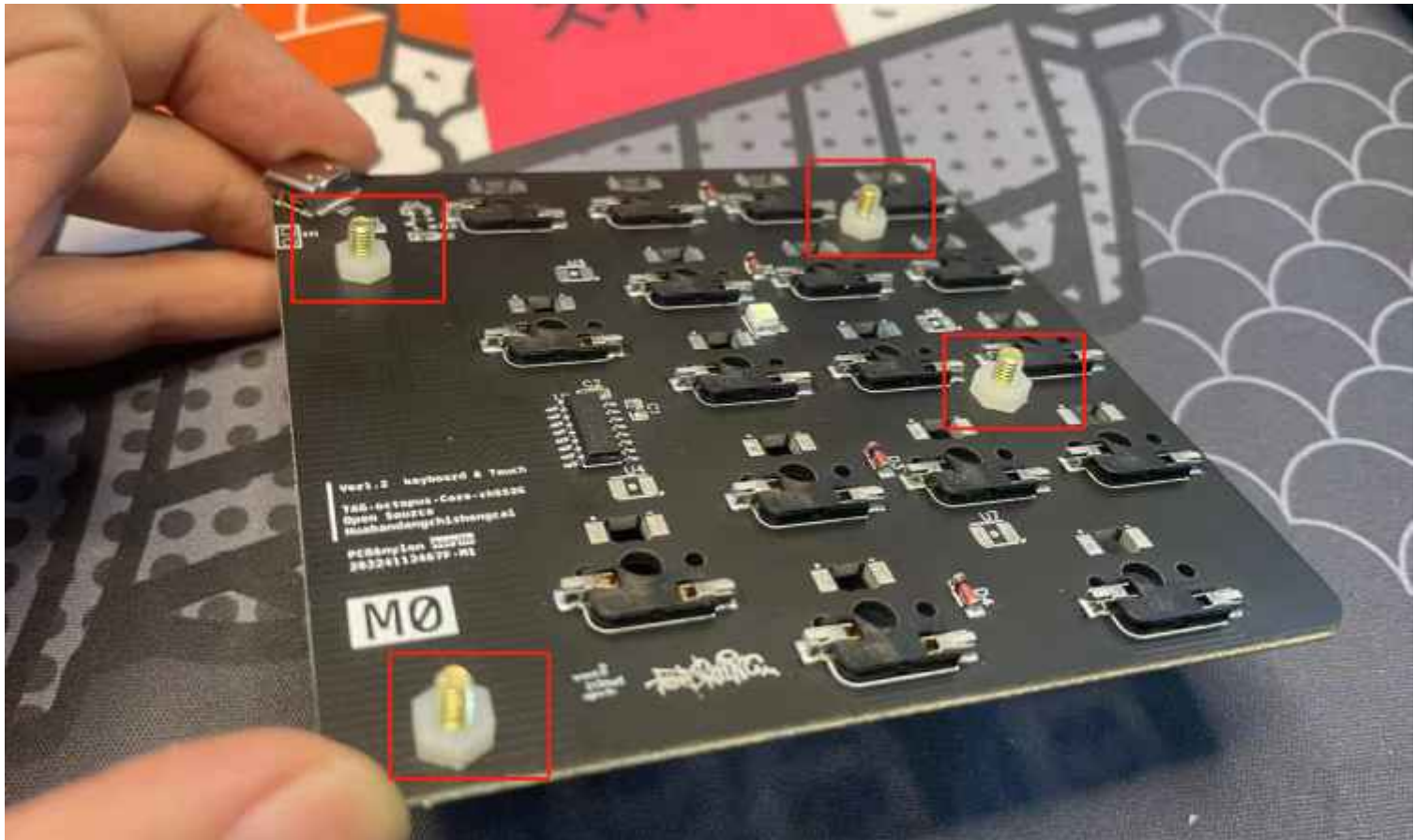


Keebmonkey Touch Pad Numpad Diy Kit Installation Guide

Installation instructions

1. fixed copper screw

The screw passes through the motherboard from the front, and is secured with a white nylon nut.



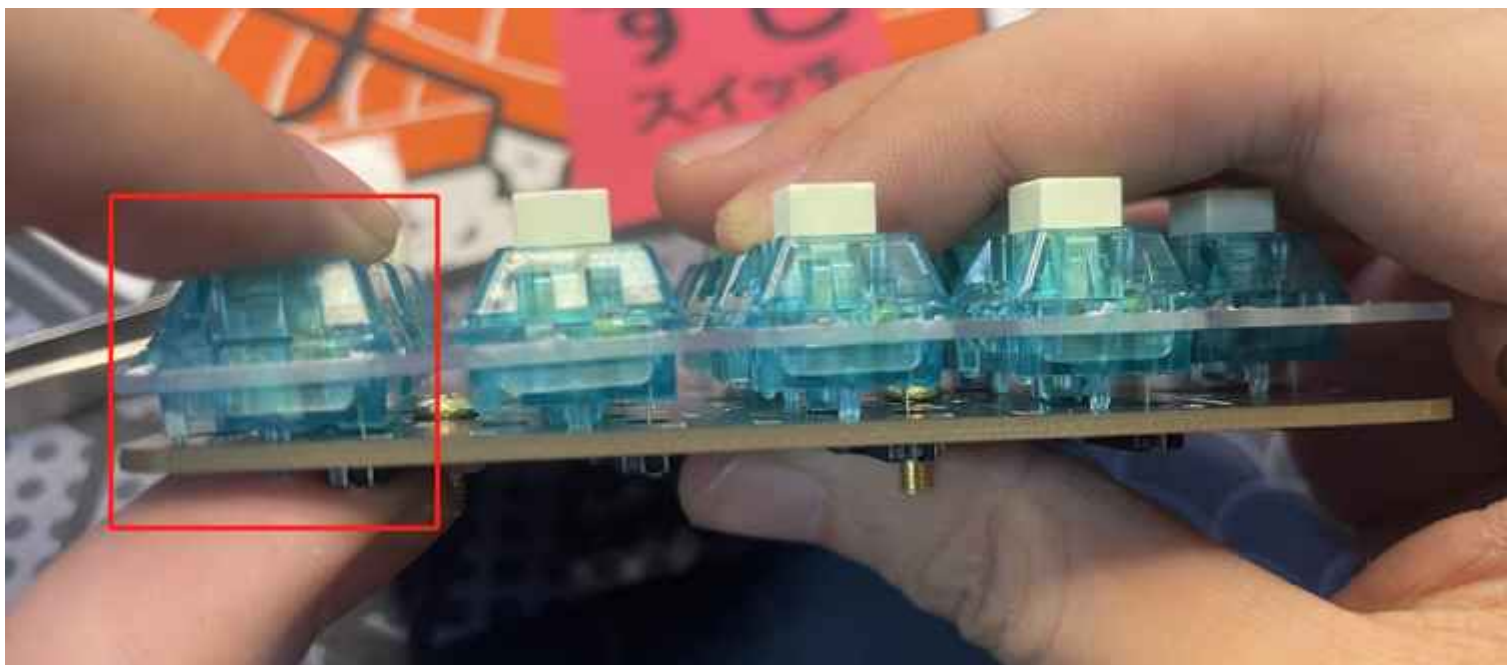
2. Install the shaft onto the positioning plate

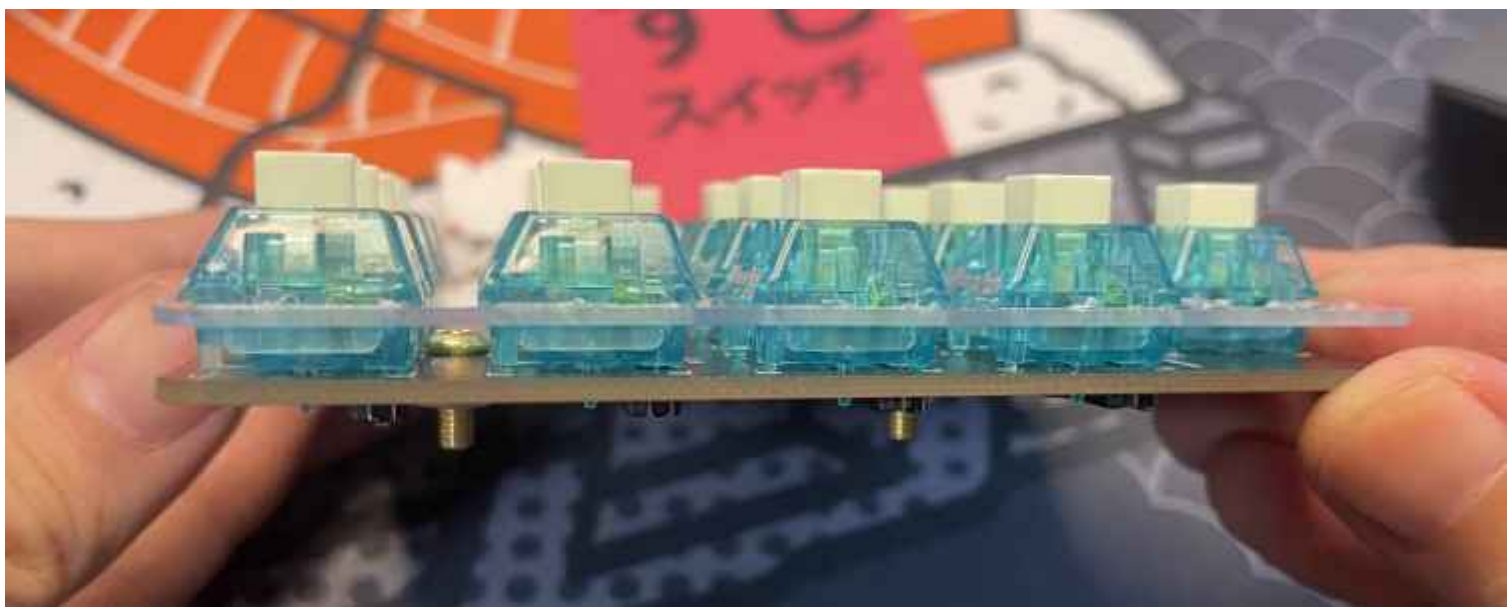
Clean the positioning plate and insert the shafts one by one into the positioning plate. Pay attention to the light hole of the shaft facing upward. The right side with the '+' and 'Enter' is designed as a quick-release slot without a lock, so it can be installed last.



3. Install the shaft onto the motherboard

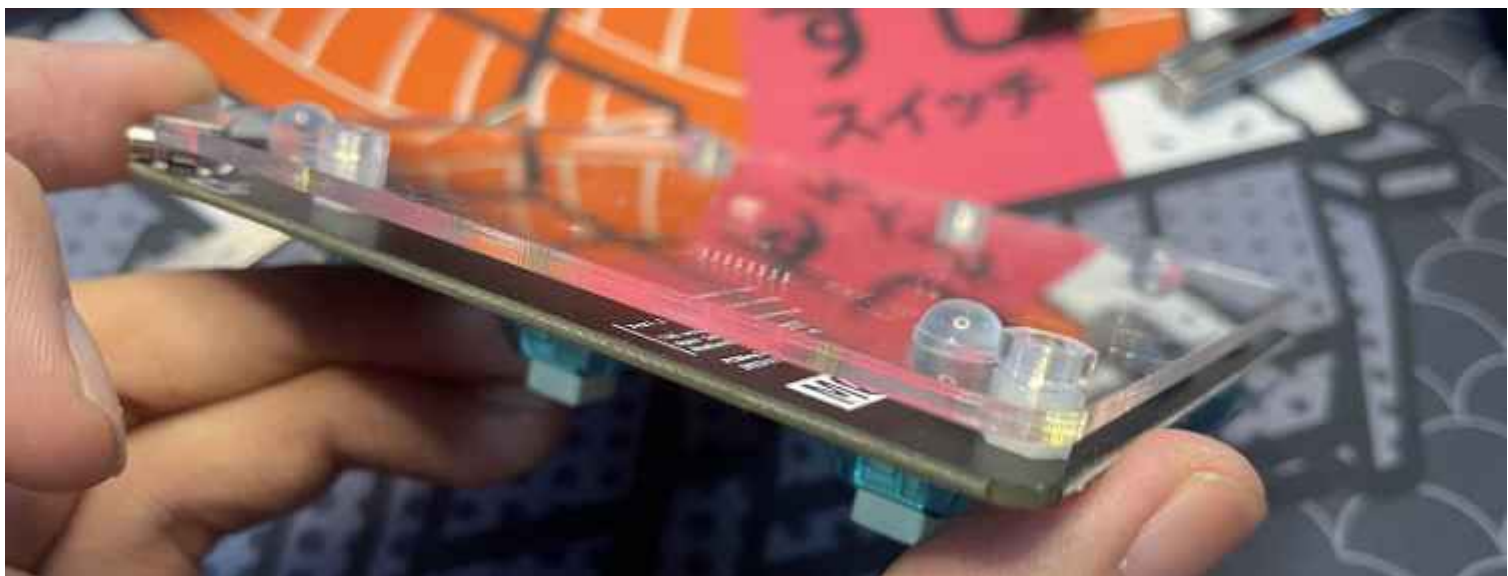
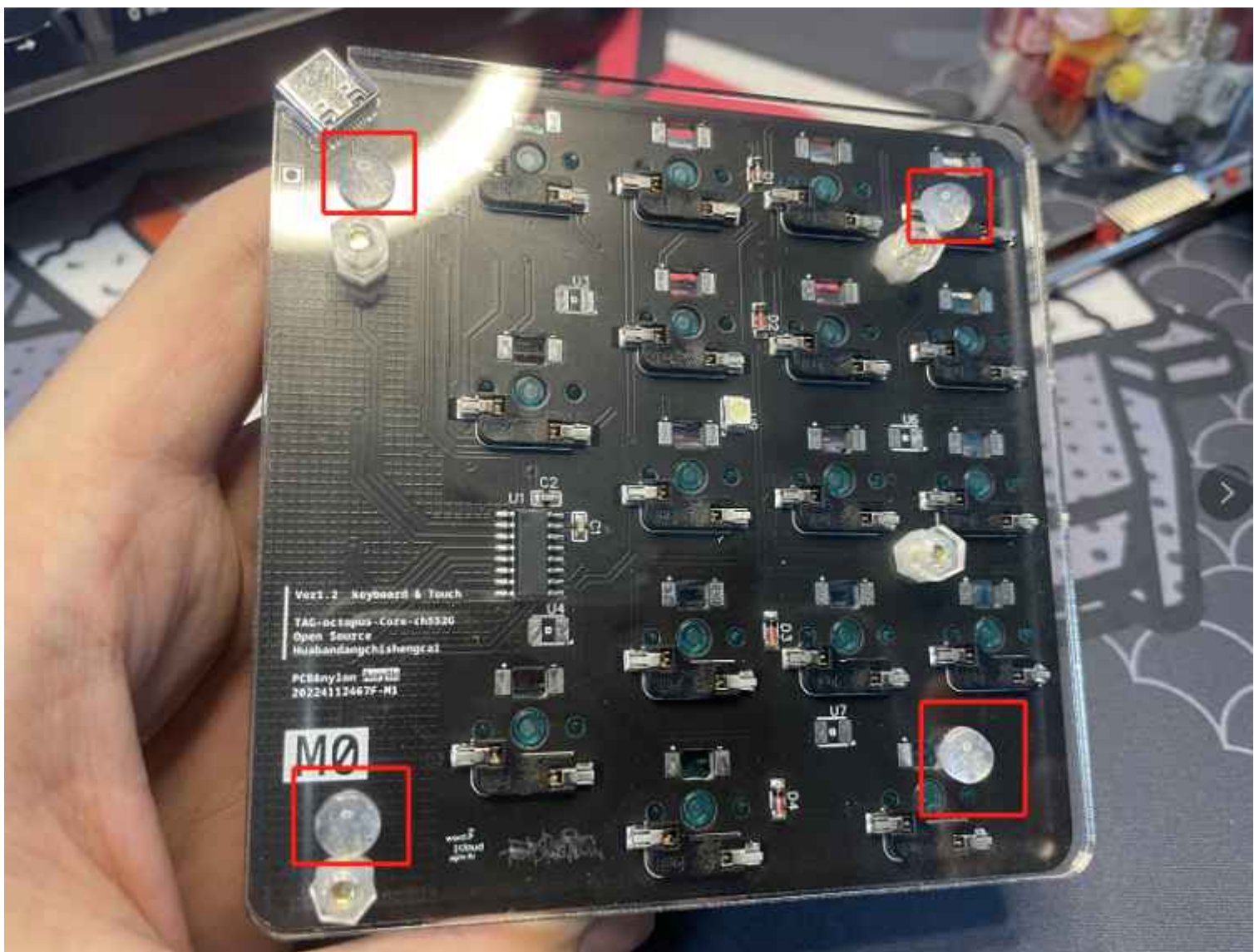
Straighten the copper legs of the shaft, align them with the corresponding holes, and press them into the socket one by one. The first insertion may be tight, so you can use your thumb to support the socket and apply pressure to avoid damaging it.





4. Install the bottom plate

Secure the acrylic bottom plate underneath the motherboard, using transparent acrylic nuts to fix it from the outside. Finally, attach transparent foot pads to the four corners of the bottom plate for stability and anti-slip purposes.



5. Installation complete

At this stage, all that's left is to install the keycaps. Make sure to choose a USB to C cable that supports data transmission.



LED soldering instructions

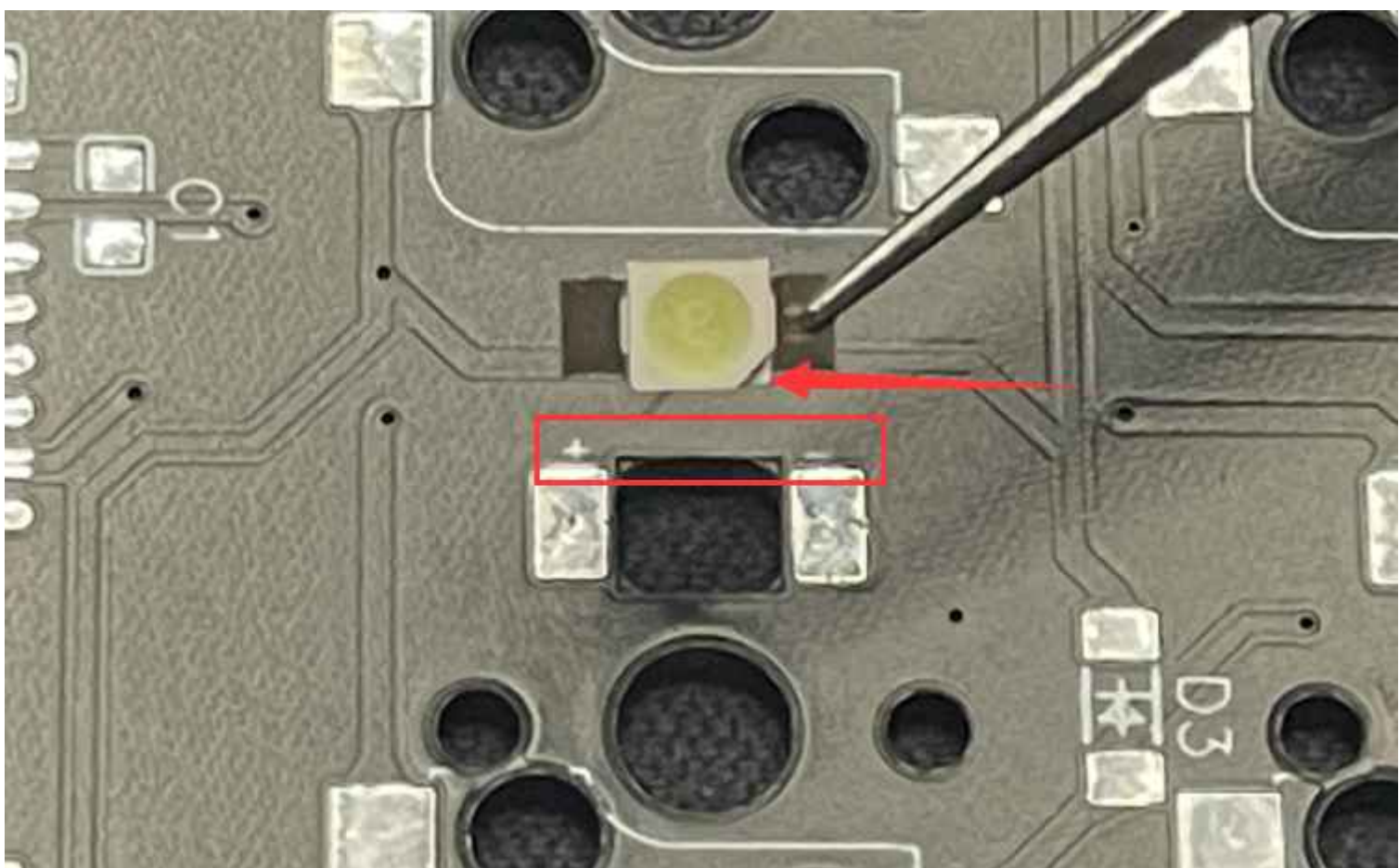
Preparation

Single-color LED strip under the switches, size 3528; Single-color LED strip at the bottom, size 3028

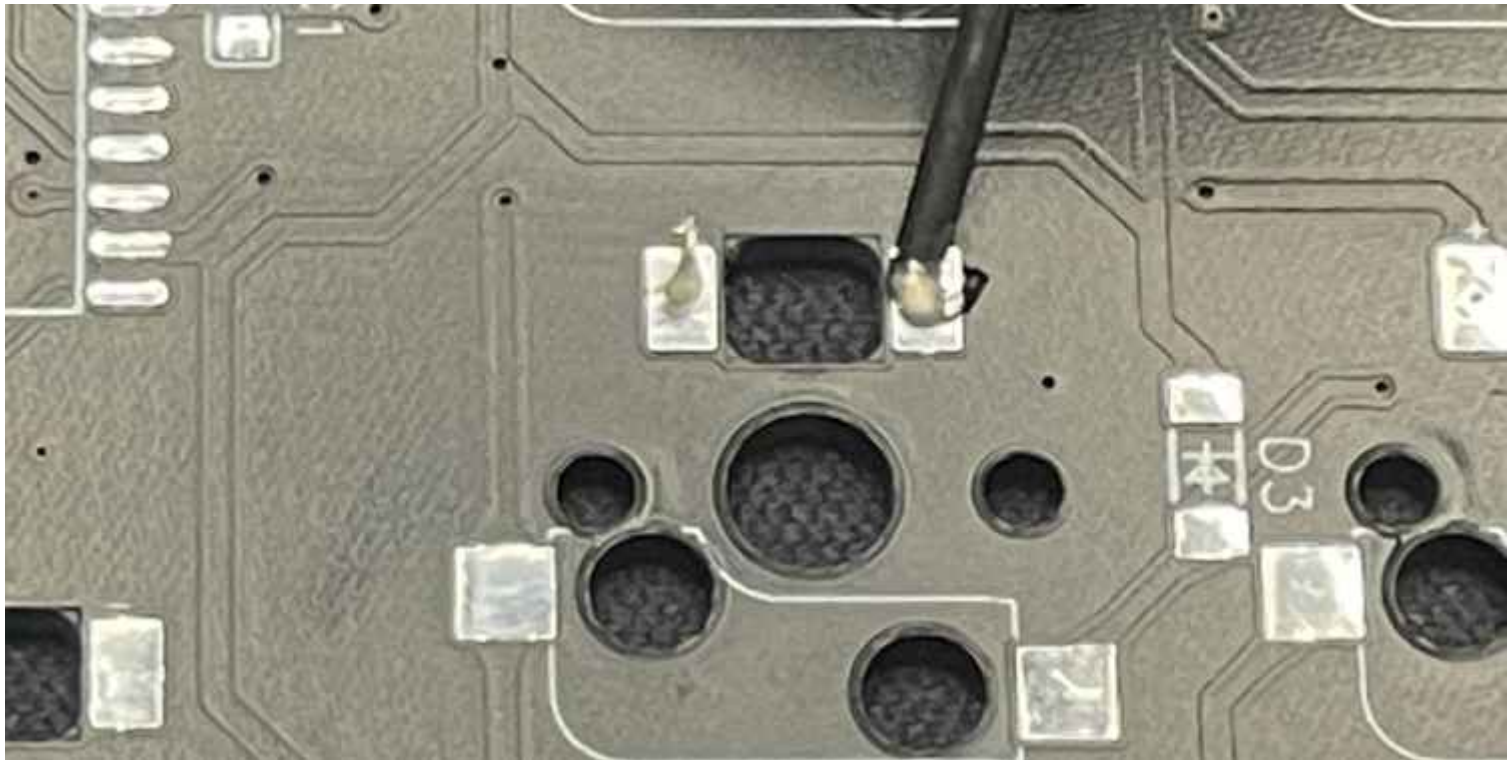
Attention: It is possible to mix colors, but it is advisable to avoid using red color. This is because red LEDs have different power characteristics, which can lead to situations where only the red color lights up after soldering, while other colors may not light up or have inconsistent brightness. Therefore, it is recommended to use the same color.

Start

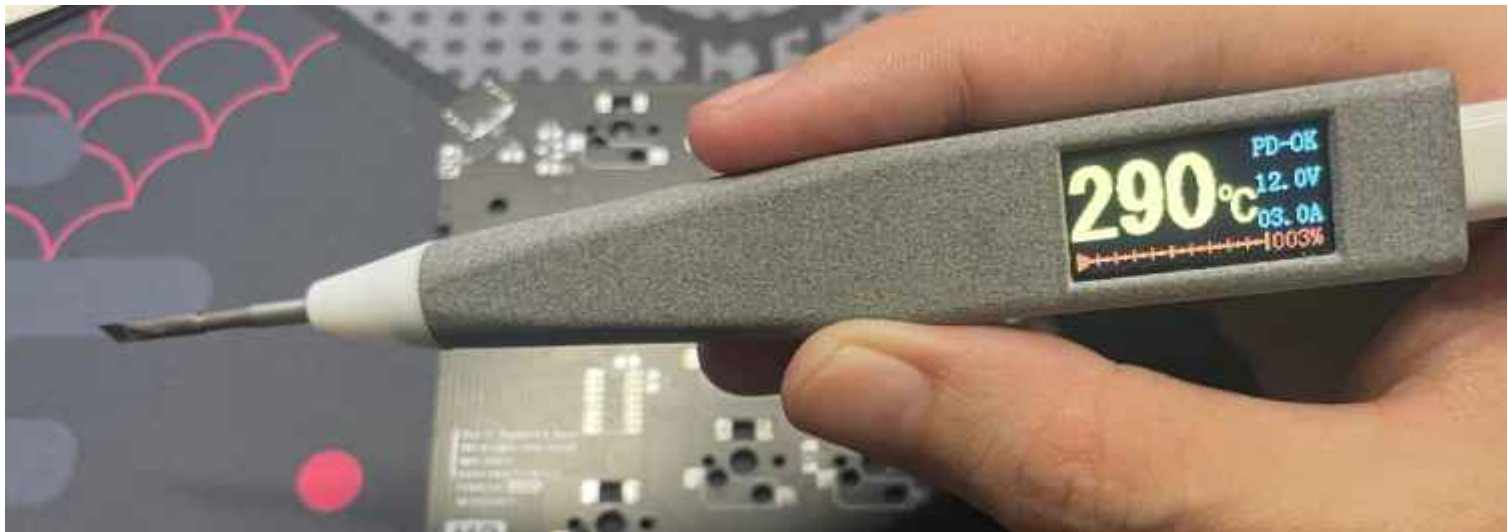
1. Distinguish between positive and negative terminals. The side of the LED with a notch represents the negative (-) terminal, which corresponds to the + and - symbols on the motherboard.



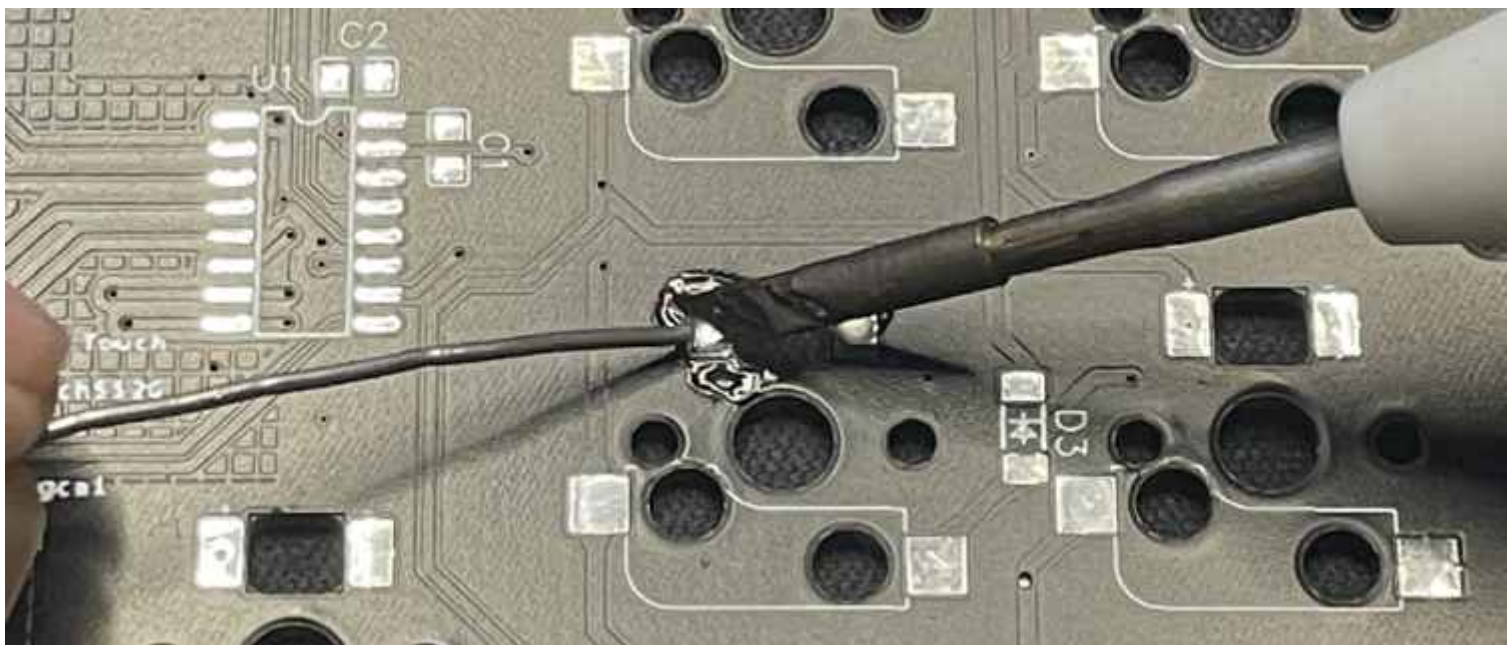
2. It is best to apply some flux on the solder pads to facilitate soldering, as it improves the flow and adhesion of the solder. However, if you don't have any, it can be omitted.



3. Soldering iron temperature, for normal beginners, around 300 degrees Celsius is sufficient. If your soldering iron does not have temperature display, as long as it can melt the solder, it is adequate. The requirements are not high.



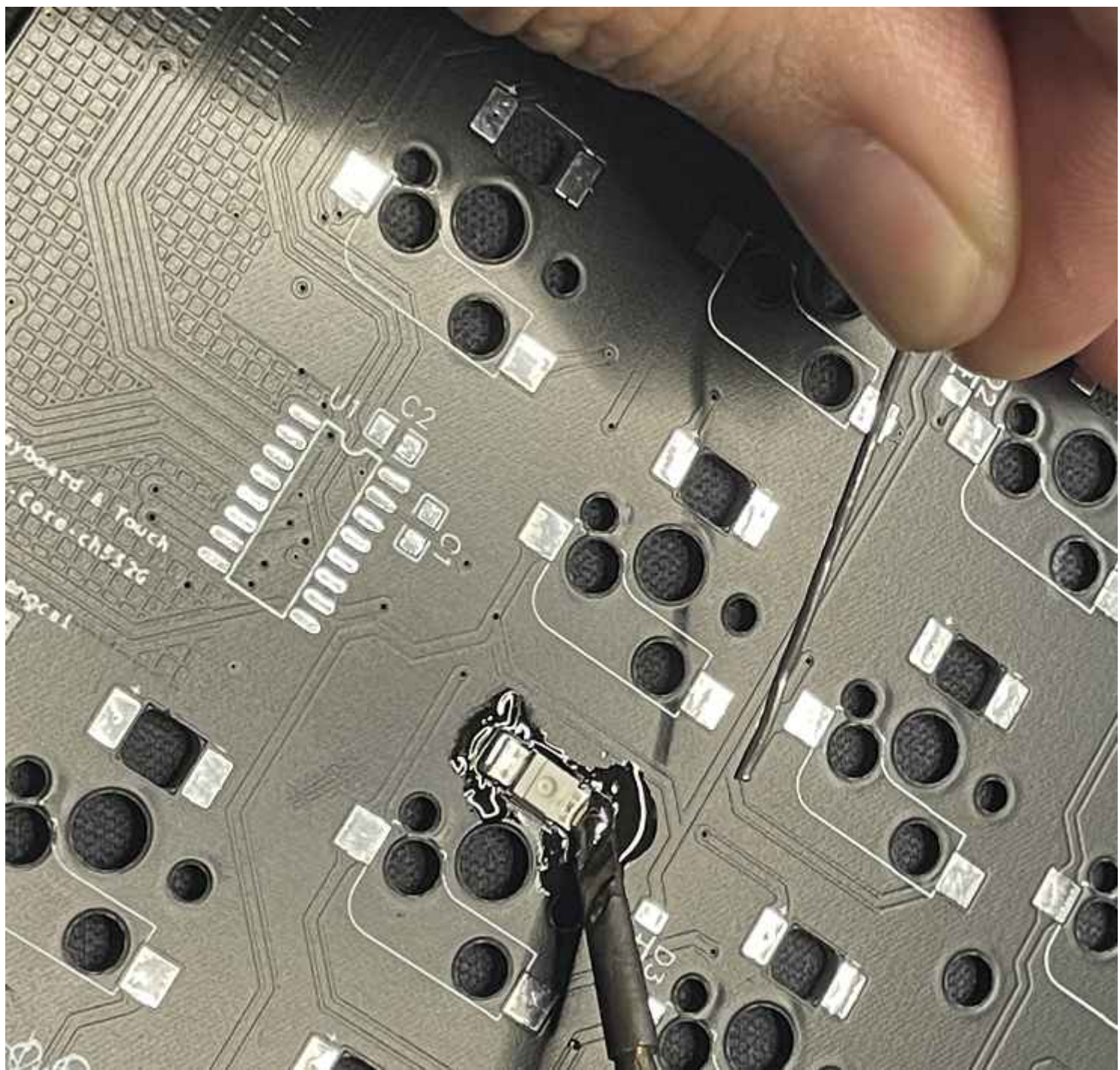
4. Do not put the LED in place. Apply some solder to one side of the solder pad, and leave the other side without solder.



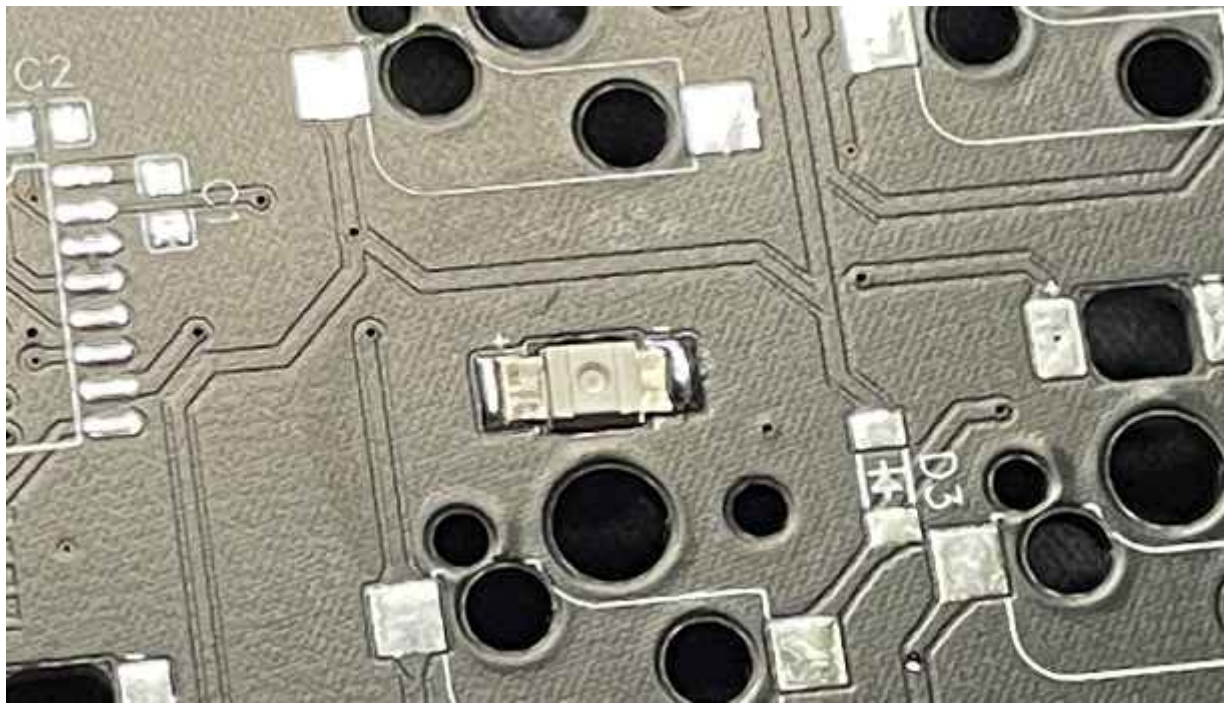
5. Afterward, place the LED on the solder pad where solder has been applied. The solder on the tip of the soldering iron doesn't need to be excessive, use the existing solder on the solder pad. For beginners, it usually takes 4-5 seconds before removing the soldering iron from the solder joint. If the positioning is incorrect, the solder can be remelted and adjusted using tweezers or similar tools. It becomes more difficult to adjust if both sides have been soldered.



6. Solder the other side as shown in the diagram. Tilt slightly and slowly feed solder wire. The solder joint should be on the outer side, preferably at the gap between the solder pad and the LED.



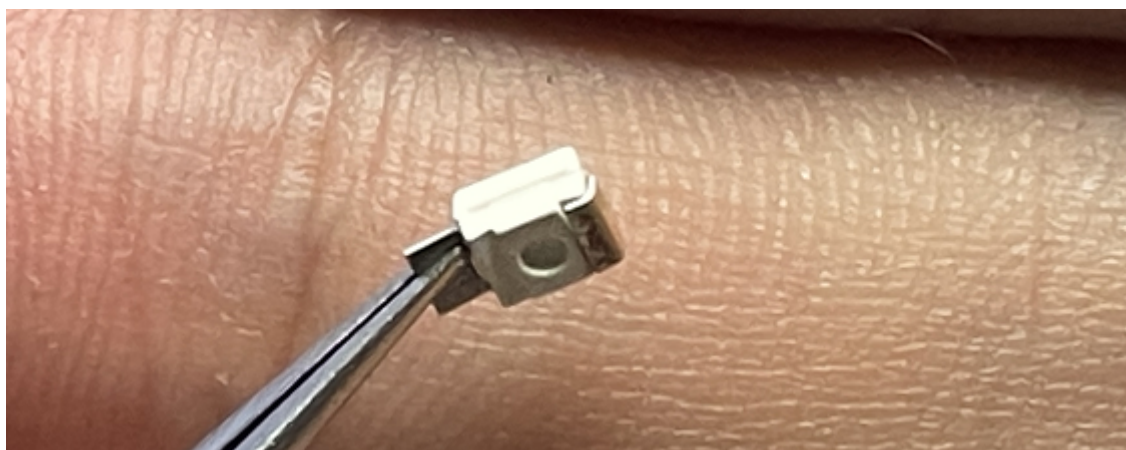
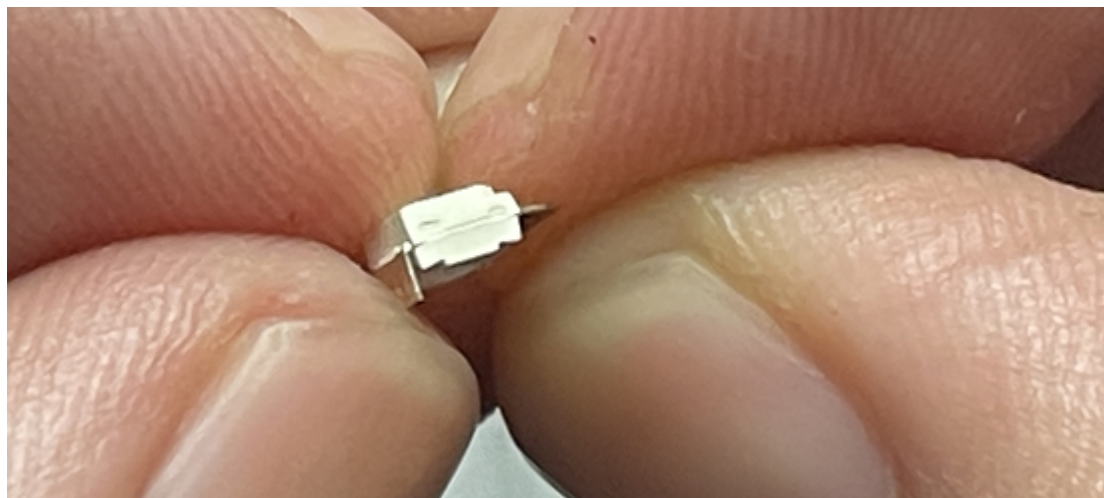
If you have PCB cleaner, use it with a cotton swab to clean the board. For those who don't have PCB cleaners, you can use alcohol instead, but make sure it dries thoroughly. Otherwise, it may cause a short circuit.



Note: It is recommended for beginners to solder one LED and test it by powering it on before proceeding with the rest. This way, any issues can be identified and resolved early on, rather than discovering that none of the LEDs light up after completing the entire soldering process.

bottom light

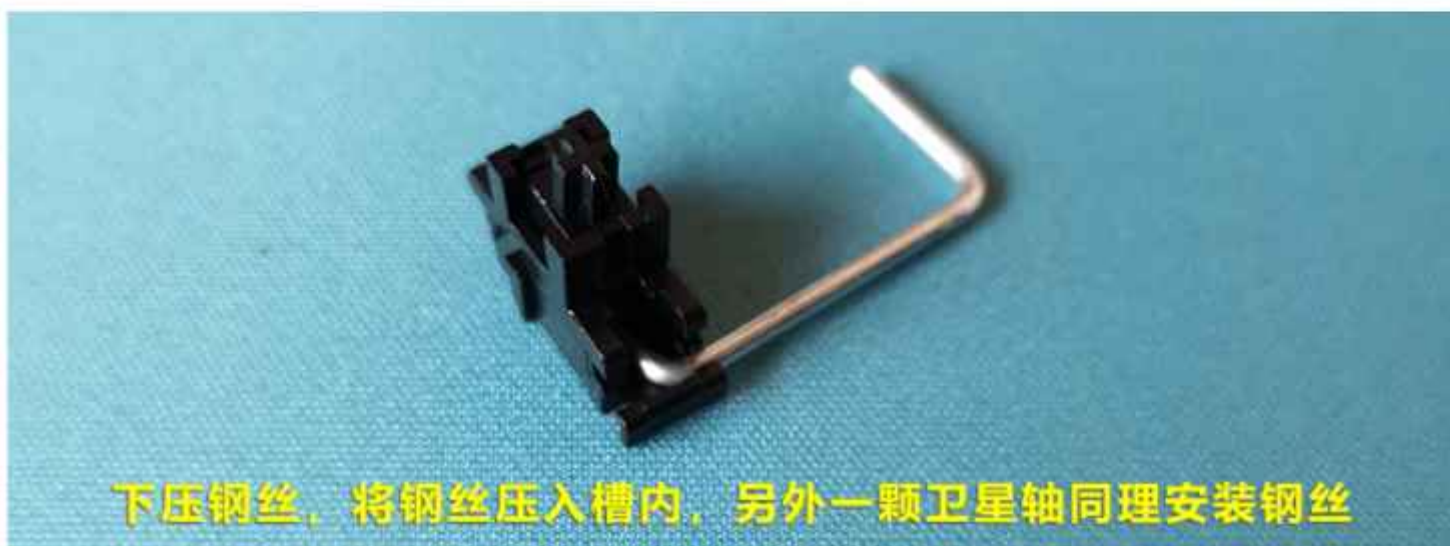
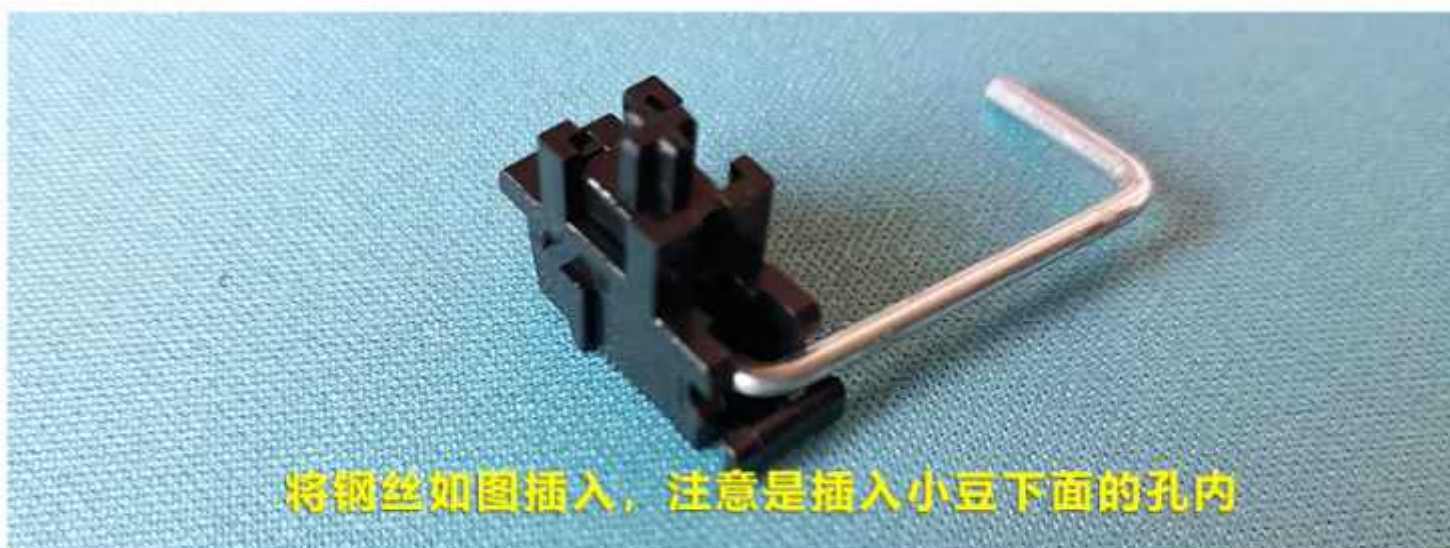
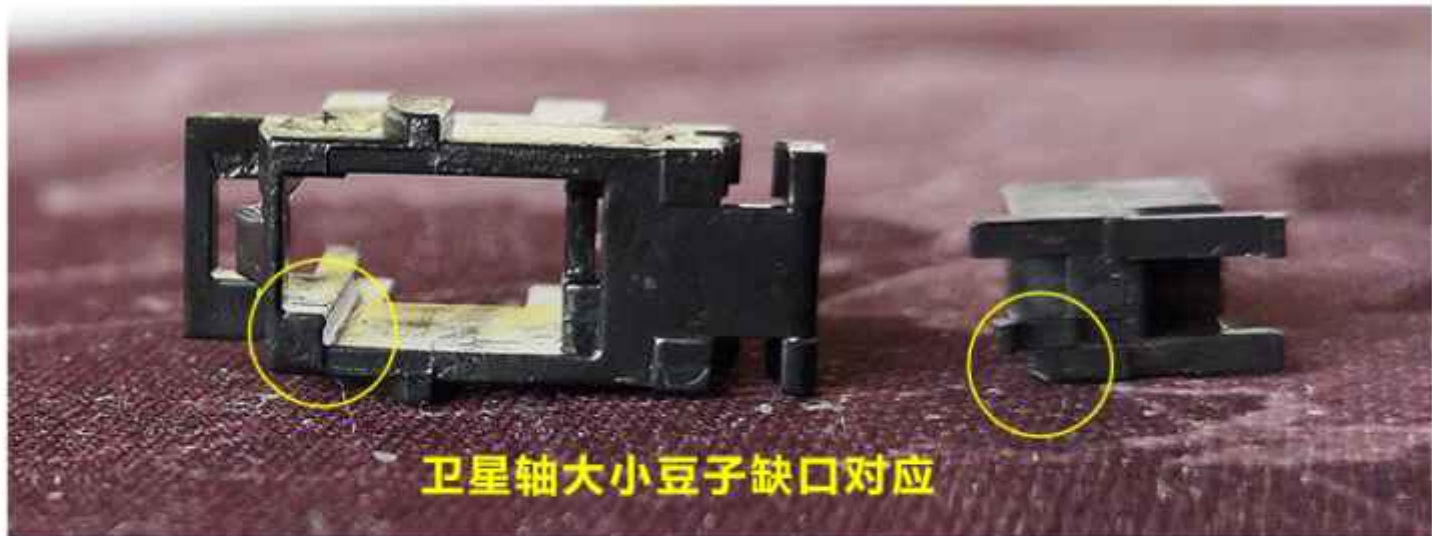
You can choose the corresponding model, which is the 3028 size. If you want to simplify things, you can just bend the legs of the under-switch LED. It will work the same way. You can use needle-nose pliers or even nail clippers to accomplish this. The soldering method is the same as mentioned above.



Stabs installation

1. Assemble satellite switches: Assemble the satellite switches in advance for later use.

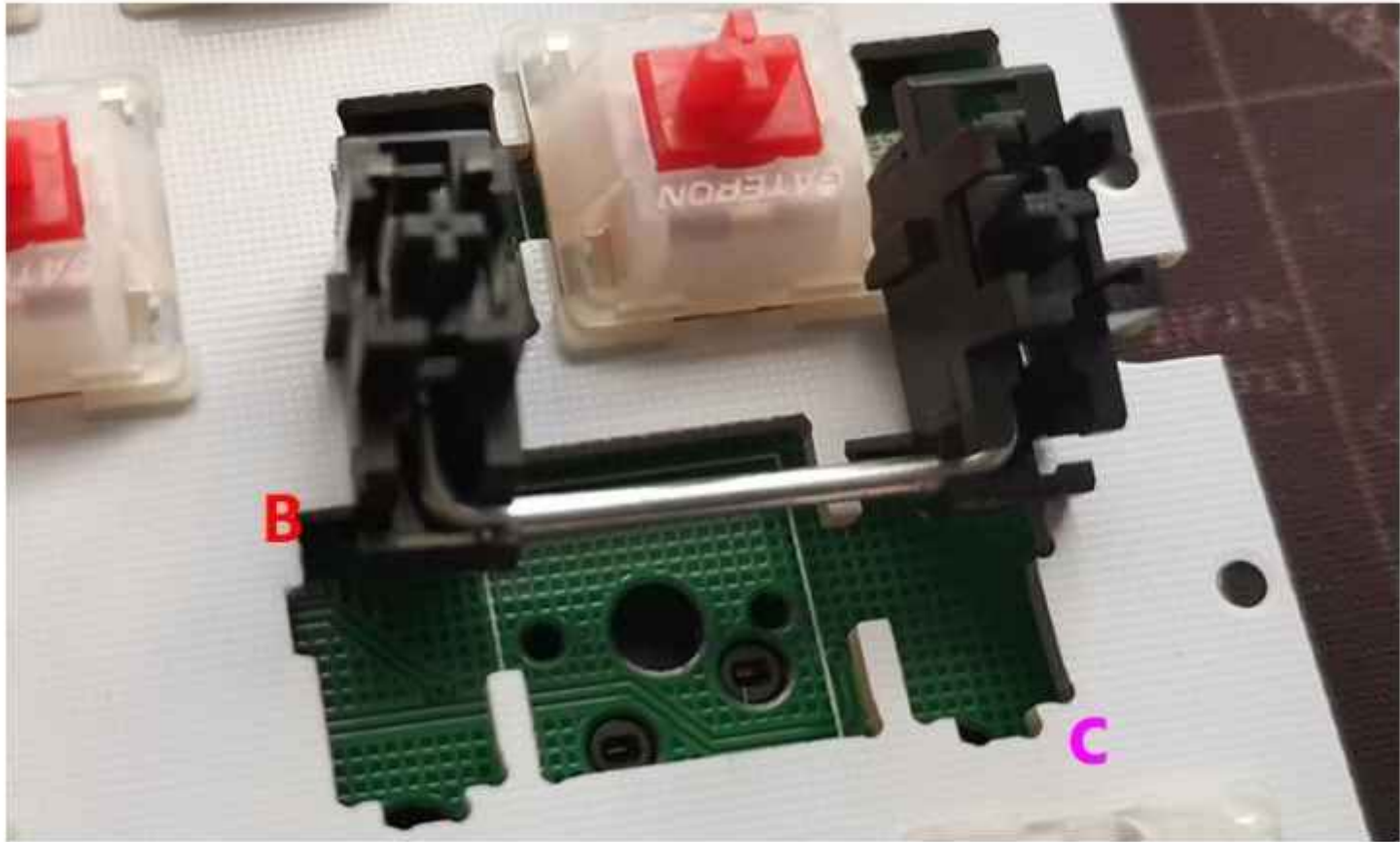
先组装好卫星轴备用



2. Insert the satellite switch into the positioning plate: In the first step, locate the satellite switch holes and align them correctly as shown in the diagram. The side with the steel wire, labeled as B, should correspond to the side of the switch hole with a notch, labeled as C.

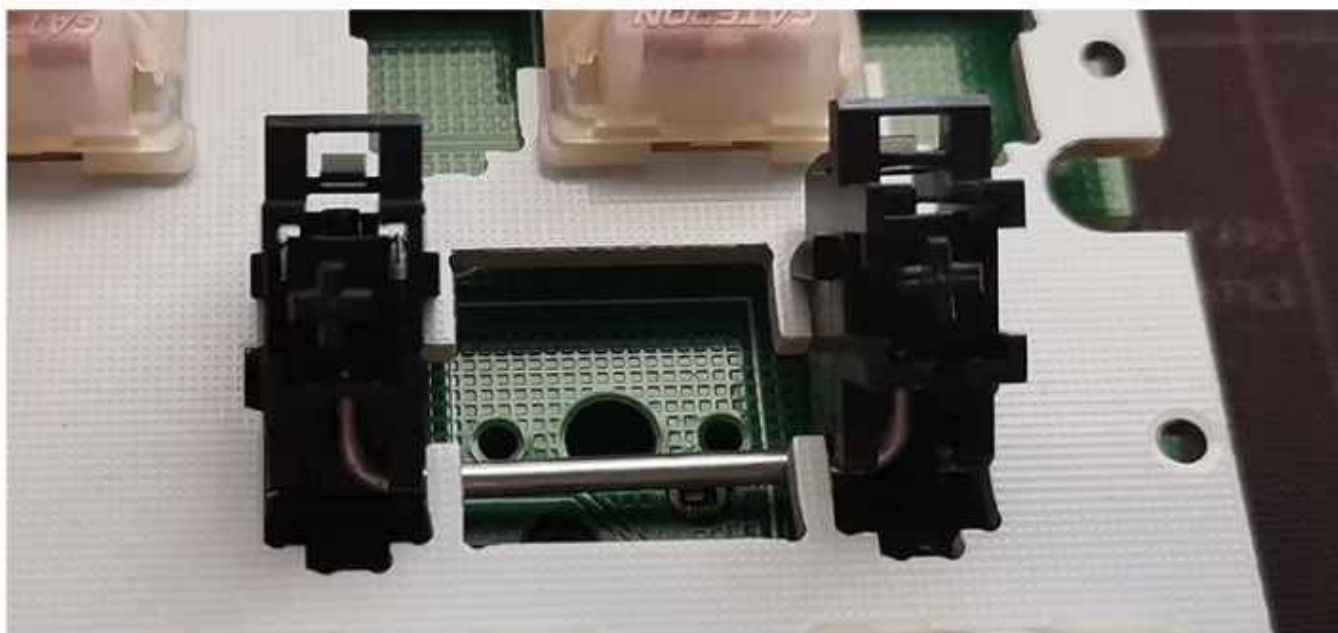
接下来将卫星轴安装到定位板上

第一步：首先找到卫星轴孔，如下图对应好方向，有钢丝的一面B对应轴孔上有缺口的一面C



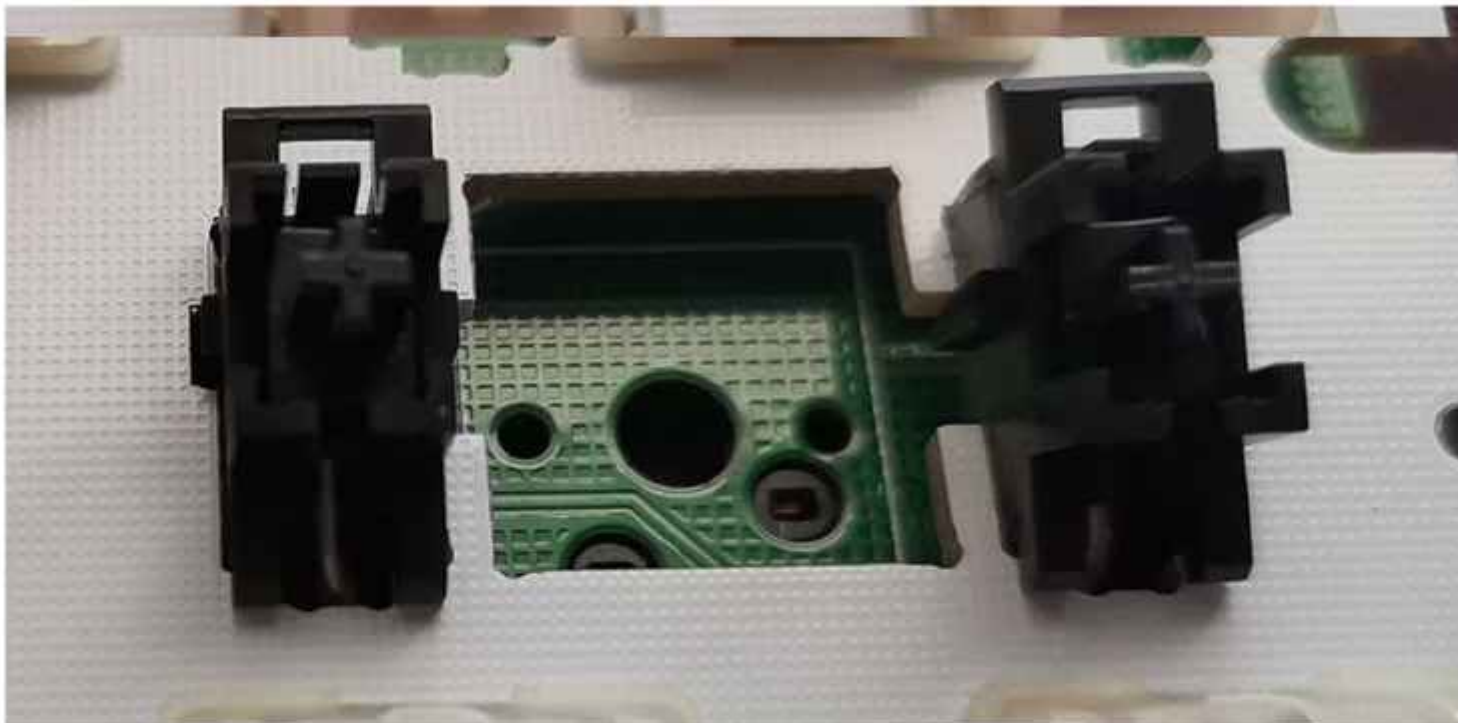
3. In the second step, insert the satellite switch diagonally into the satellite switch hole, ensuring that the steel wire passes through the middle notch and goes underneath the positioning plate as shown in the diagram.

第二步：将卫星轴斜着插入卫星轴孔，钢丝要如下图通过中间缺口放到定位板下面



4. In the third step, as shown in the diagram, continue to insert the satellite switch diagonally into the satellite switch hole until it is securely seated.

第三步：如下图，继续斜看将卫星轴卡入卫星轴孔



5. In the fourth step, after fully inserting the side B with the steel wire, press down on the satellite switch A until the other side's latch securely locks into the positioning plate.

第四步：有钢丝一面B完全卡入后，将卫星轴另外一面A下压，直到另外一面卡扣卡入定位板

